

UNIT SPECIFICATIONS

KVAR	HARMONIC	VOLT	Hz	PHASE	HP	AMPS
90	5TH	480	60	3	300	361

SCHEMATIC : 29597-PQ6

GROUND LUG:

WIRE RANGE - TWO 350MCM-4  
TIGHTENING TORQUE 375 IN-LB.

L1 L2 L3 T1 T2 T3

CUSTOMER CONNECTIONS:

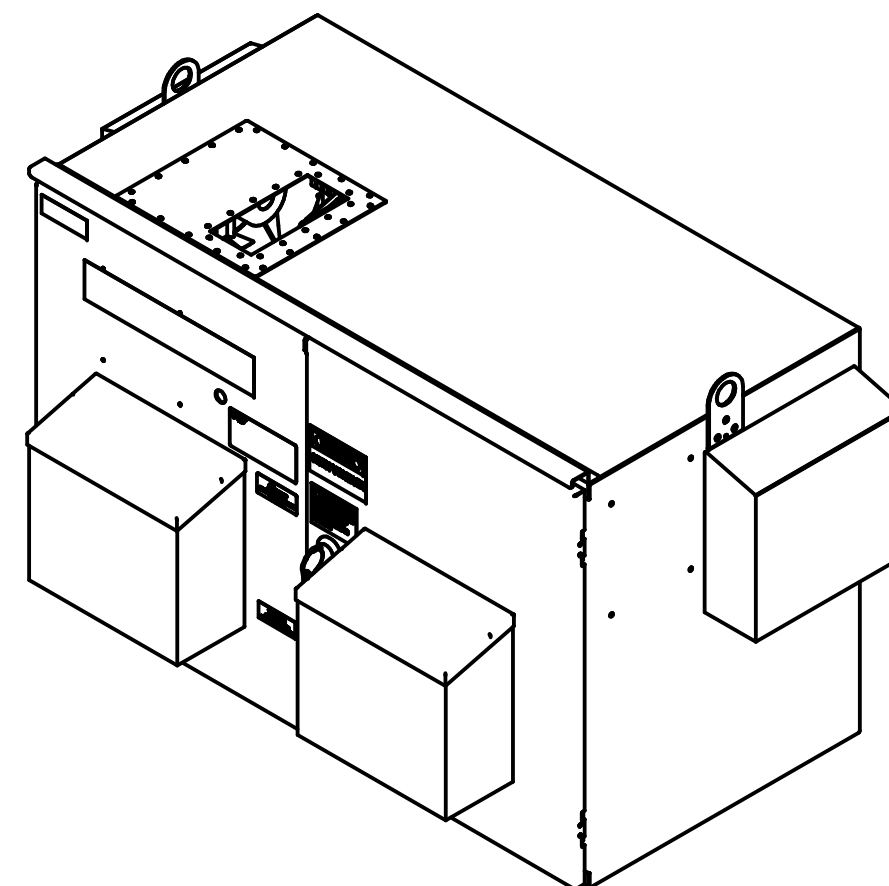
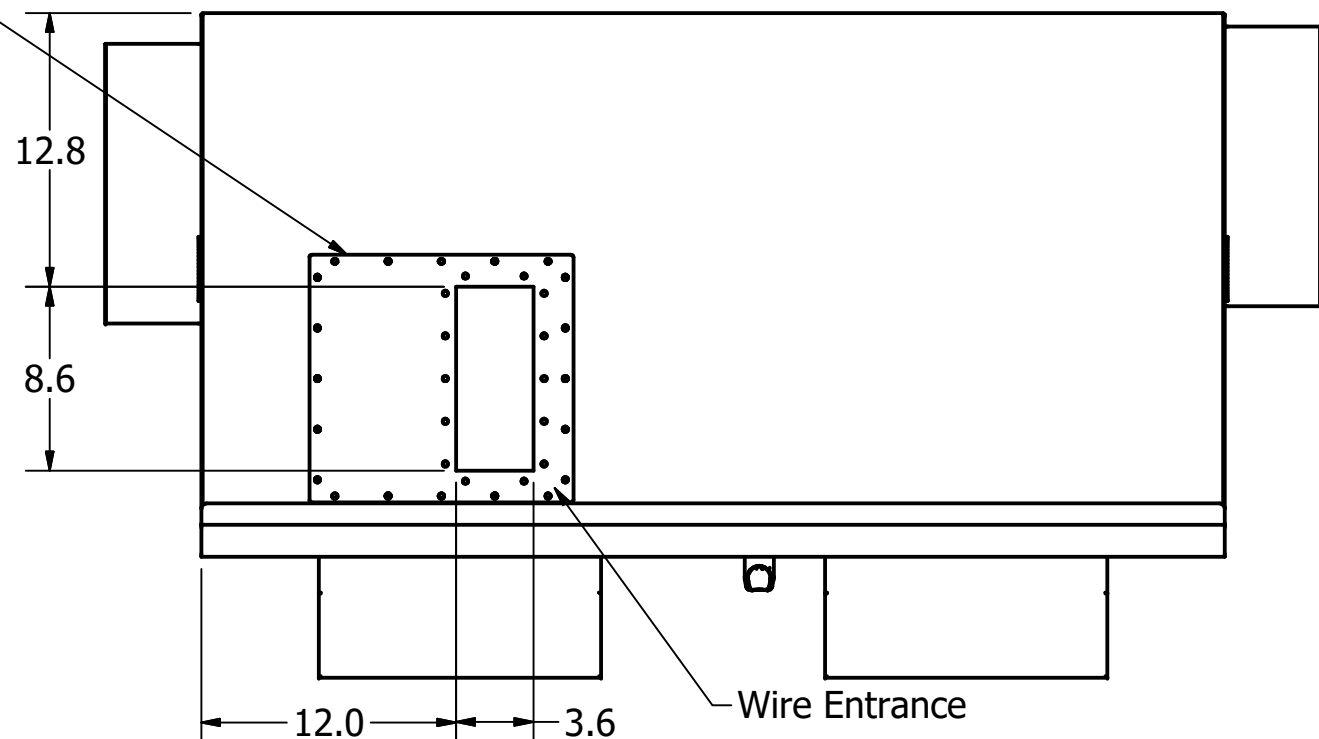
WIRE RANGE - TWO 350MCM-4  
TIGHTENING TORQUE 375 IN-LB.

Notes:

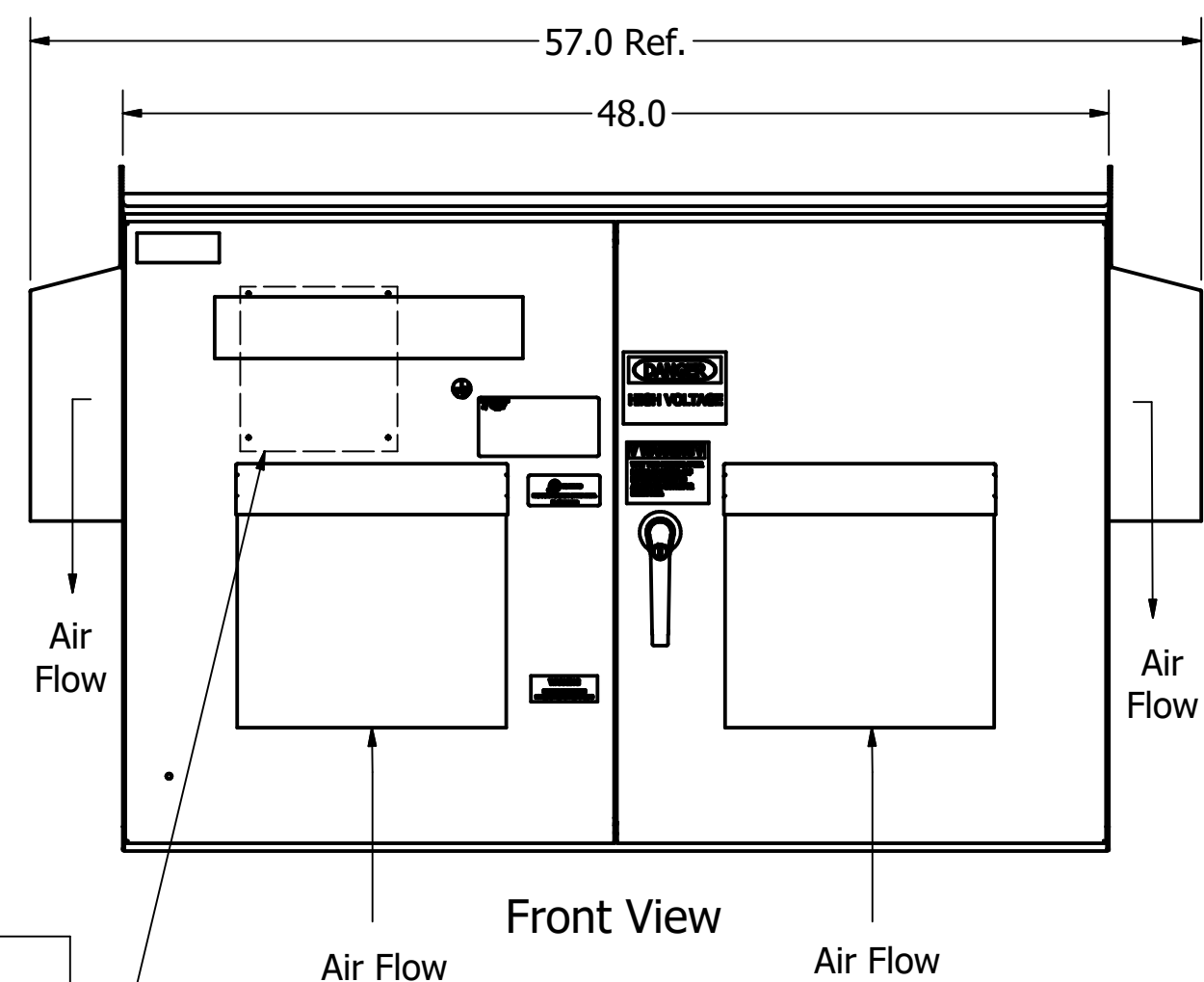
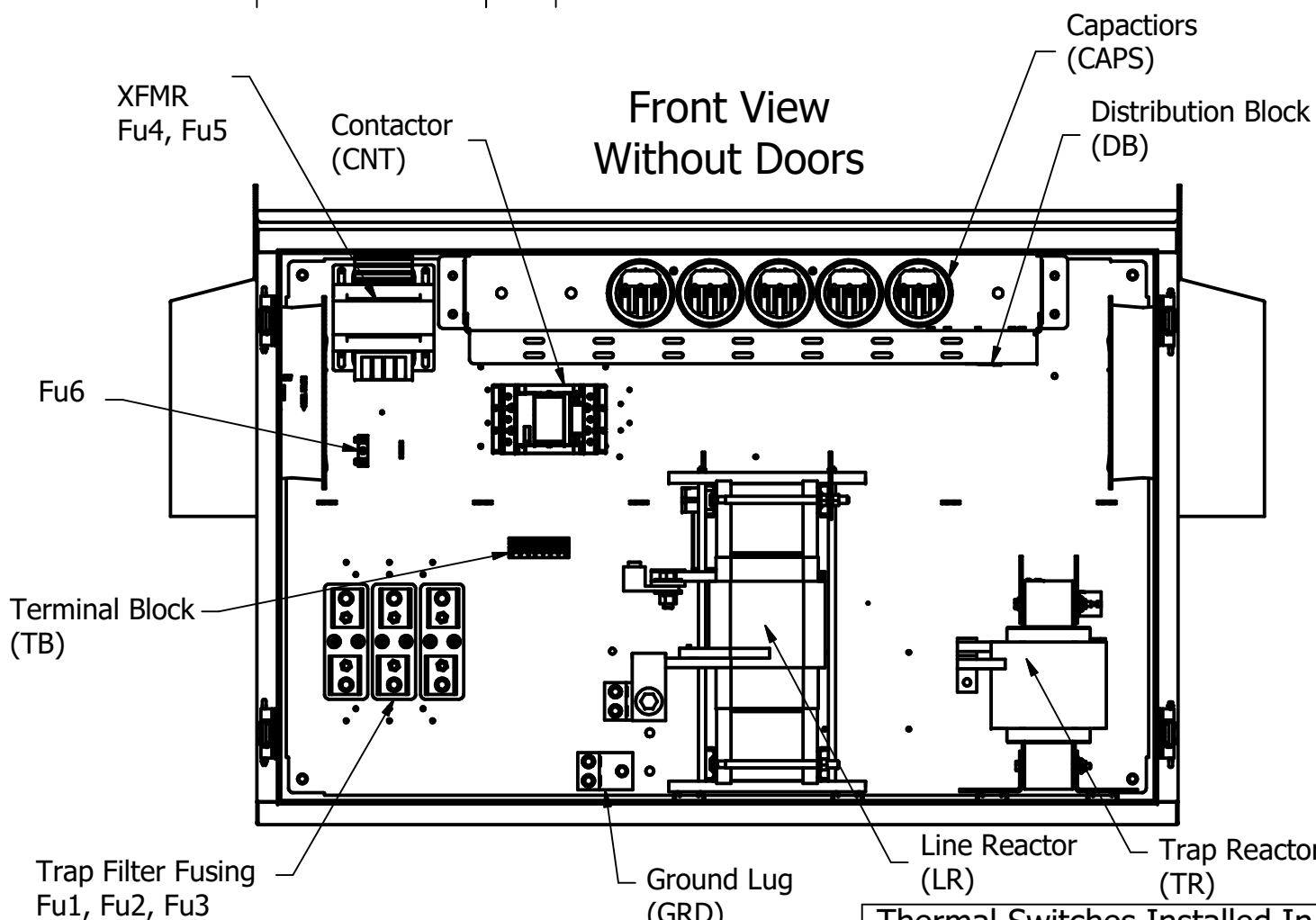
1. Customer is responsible for installation to meet all national and local electrical codes.
2. Use only hubs or fittings that comply with UL514B for type 3R enclosures.
3. Approx. WT LBS : 800
4. Enclosure Color: RAL 7006 Beige Grey

Customer Wire Entry  
And Exit Location  
If Unused, Customer  
Recommended To Caulk  
Edges Of Close Plate

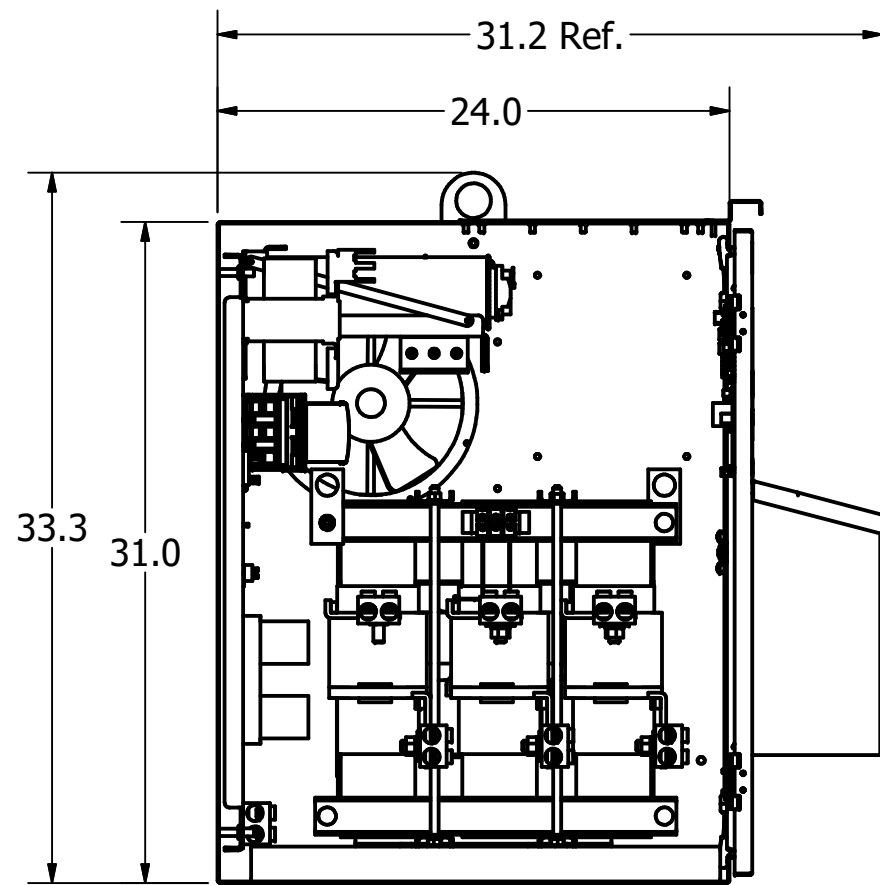
Top View



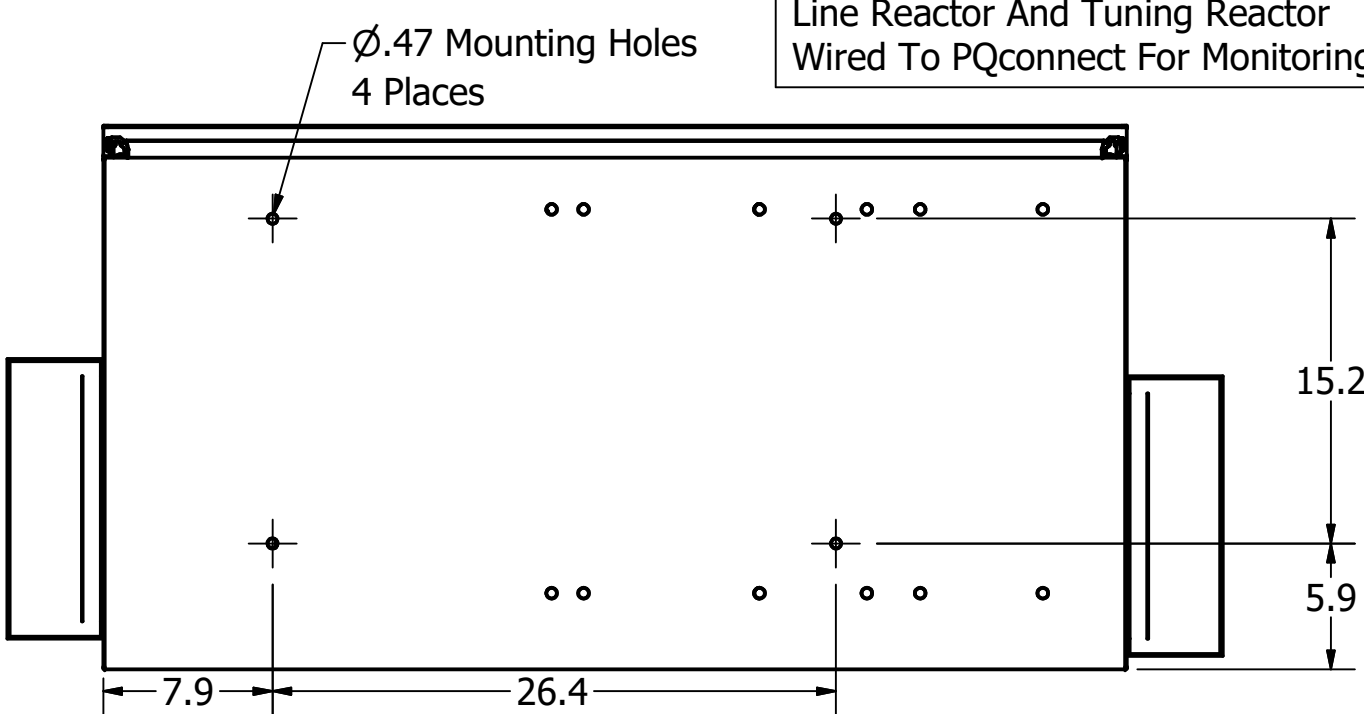
Front View  
Without Doors



Side View  
Without Wall



Bottom View



THE INFORMATION AND DESIGNS CONTAINED IN THIS DRAWING ARE CONFIDENTIAL AND THE PROPRIETARY PROPERTY OF ALLIED MOTION TECHNOLOGIES INC. AND ITS SUBSIDIARIES. NEITHER THIS DESIGN NOR ANY INFORMATION CONTAINED IN THIS DRAWING MAY BE REPRODUCED OR DISCLOSED TO OTHERS WITHOUT THE EXPRESS WRITTEN CONSENT OF ALLIED MOTION TECHNOLOGIES INC. AND ITS SUBSIDIARIES.

REVISION	DATE	BY	ANGULAR
B	05/09/22	JRN	FRACTIONAL ± 1/32
A	05/02/19	JRN	ANGULAR ± 1°
NO			

TOLERANCES (EXCEPT AS NOTED)  
DECIMAL  
.XX ± .25  
.XXX ± .10

**TCI**  
An Allied Motion Company

W132N10611 Grant Drive  
Germantown, WI 53022  
© 2022 TCI, LLC

HarmonicGuard Passive  
300HP, 480/3/60, Type 3R, JCI, PQconnect

DRN BY: JRN DATE: 05/02/19  
SCALE: 1/9 APRVD: SIZE: C

108108DG  
SHT.1 OF 1